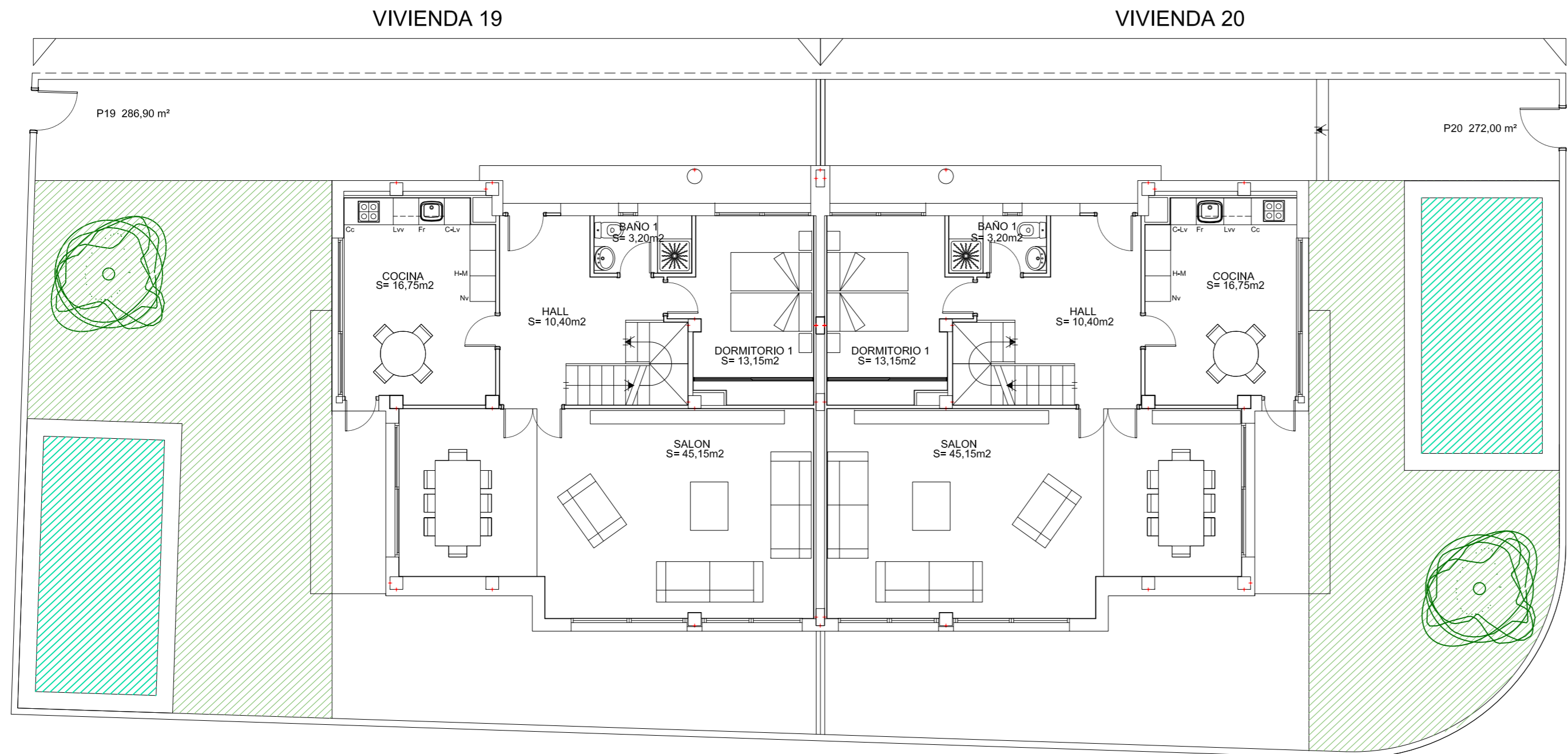
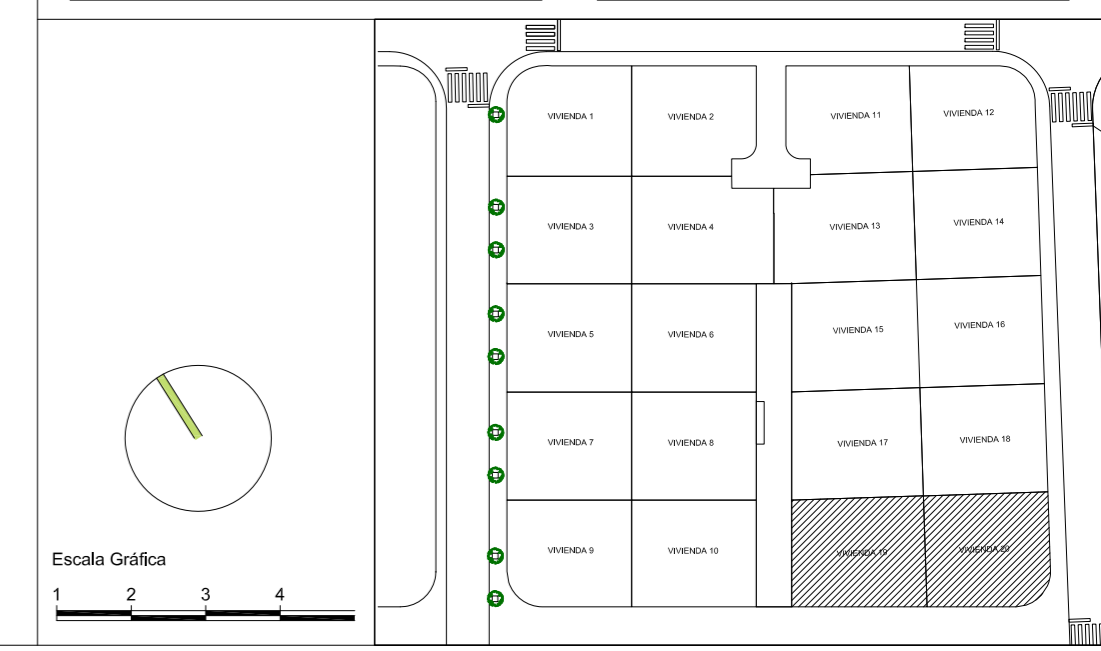


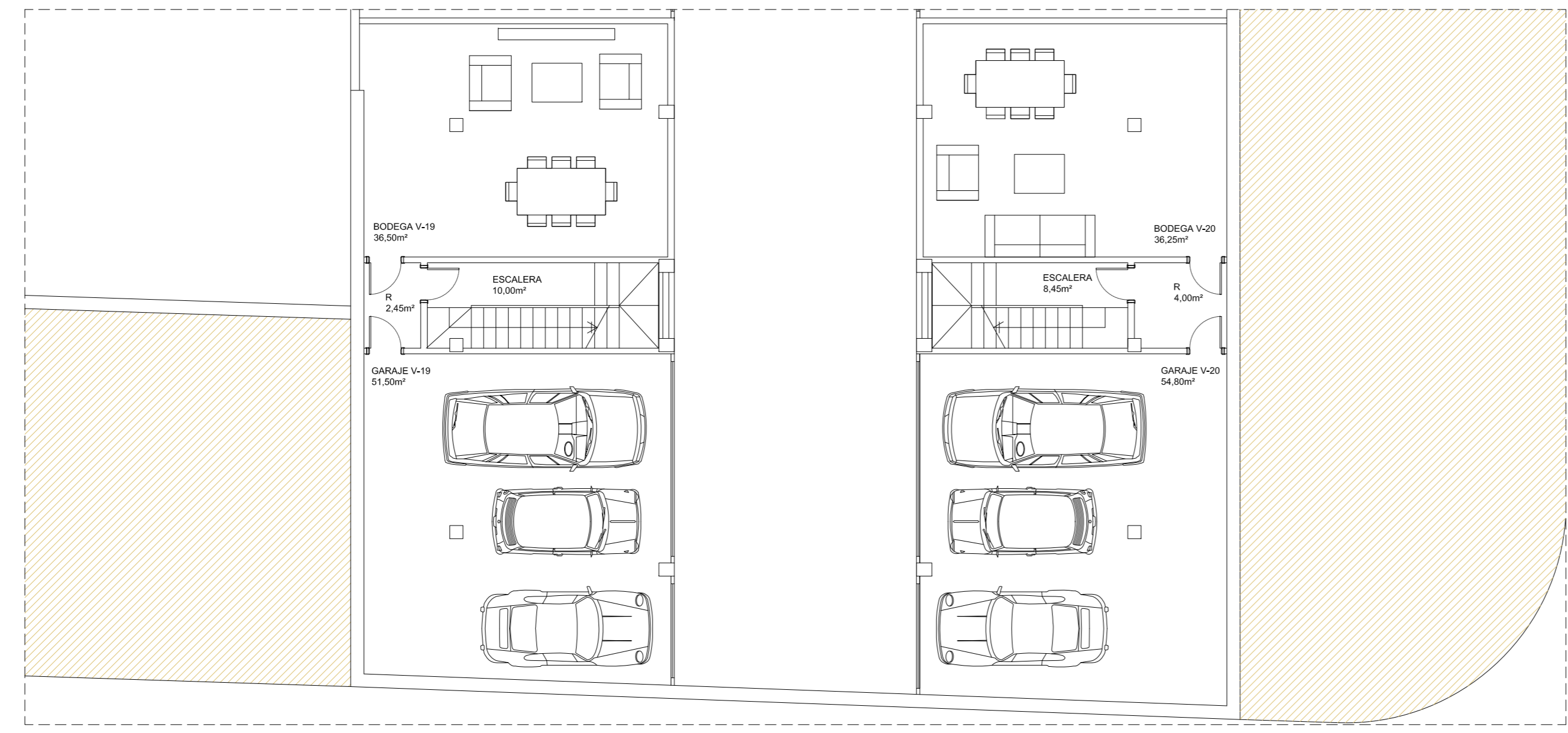


**20 VIVIENDAS  
UNIFAMILIARES PAREADAS  
PARCELA 9 SECTOR 5.2  
CUARTE DE HUERVA**

| VIVIENDA 19 Sup 286,90 m <sup>2</sup> |               | VIVIENDA 20 Sup 272,00 m <sup>2</sup> |               |
|---------------------------------------|---------------|---------------------------------------|---------------|
| <b>SUP. UTIL CERRADA PL. BAJA</b>     |               | <b>SUP. UTIL CERRADA PL. BAJA</b>     |               |
| HALL                                  | 10,40         | HALL                                  | 10,40         |
| SALON                                 | 45,15         | SALON                                 | 45,15         |
| COCINA                                | 16,75         | COCINA                                | 16,75         |
| BAÑO 1                                | 3,20          | BAÑO 1                                | 3,20          |
| DORMITORIO 1                          | 13,15         | DORMITORIO 1                          | 13,15         |
| <b>TOTAL PL. BAJA</b>                 | <b>88,65</b>  | <b>TOTAL PL. BAJA</b>                 | <b>88,65</b>  |
| <b>SUP. UTIL CERRADA PL. 1ª</b>       |               | <b>SUP. UTIL CERRADA PL. 1ª</b>       |               |
| DORMITORIO 2                          | 14,85         | DORMITORIO 2                          | 14,85         |
| DORMITORIO 3                          | 14,15         | DORMITORIO 3                          | 14,15         |
| DORMITORIO 4                          | 13,70         | DORMITORIO 4                          | 13,70         |
| VESTIDOR                              | 6,80          | VESTIDOR                              | 6,80          |
| ESP. USOS VARIOS                      | 17,15         | ESP. USOS VARIOS                      | 17,15         |
| BAÑO 2                                | 5,40          | BAÑO 2                                | 5,40          |
| BAÑO 3                                | 6,30          | BAÑO 3                                | 6,30          |
| ESCALERA                              | 4,85          | ESCALERA                              | 4,85          |
| DISTRIBUIDOR                          | 3,45          | DISTRIBUIDOR                          | 3,45          |
| <b>TOTAL PL. PRIMERA</b>              | <b>86,65</b>  | <b>TOTAL PL. PRIMERA</b>              | <b>86,65</b>  |
| <b>SUP. UTIL PL. SOTANO</b>           |               | <b>SUP. UTIL PL. SOTANO</b>           |               |
| GARAJE                                | 51,50         | GARAJE                                | 54,80         |
| BODEGA                                | 36,50         | BODEGA                                | 36,25         |
| ESCALERA                              | 10,00         | ESCALERA                              | 8,45          |
| RELLANO                               | 2,45          | RELLANO                               | 4,00          |
| <b>TOTAL PL. SOTANO</b>               | <b>100,45</b> | <b>TOTAL PL. SOTANO</b>               | <b>103,50</b> |
| <b>TOTAL UTIL CERRADA</b>             | <b>275,75</b> | <b>TOTAL UTIL CERRADA</b>             | <b>278,80</b> |
| <b>SUP. UTIL ABIERTA PL. BAJA</b>     |               | <b>SUP. UTIL ABIERTA PL. BAJA</b>     |               |
| PORCHE                                | 6,79          | PORCHE                                | 6,79          |
| JARDIN                                | 167,90        | JARDIN                                | 153,84        |
| <b>TOTAL PL. BAJA</b>                 | <b>174,69</b> | <b>TOTAL PL. BAJA</b>                 | <b>160,63</b> |
| <b>SUP. UTIL ABIERTA PL. 1ª</b>       |               | <b>SUP. UTIL ABIERTA PL. 1ª</b>       |               |
| TERRAZA                               | 8,70          | TERRAZA                               | 8,70          |
| <b>TOTAL PL. 1ª</b>                   | <b>8,70</b>   | <b>TOTAL PL. 1ª</b>                   | <b>8,70</b>   |
| <b>TOTAL UTIL ABIERTA</b>             | <b>183,39</b> | <b>TOTAL UTIL ABIERTA</b>             | <b>169,33</b> |



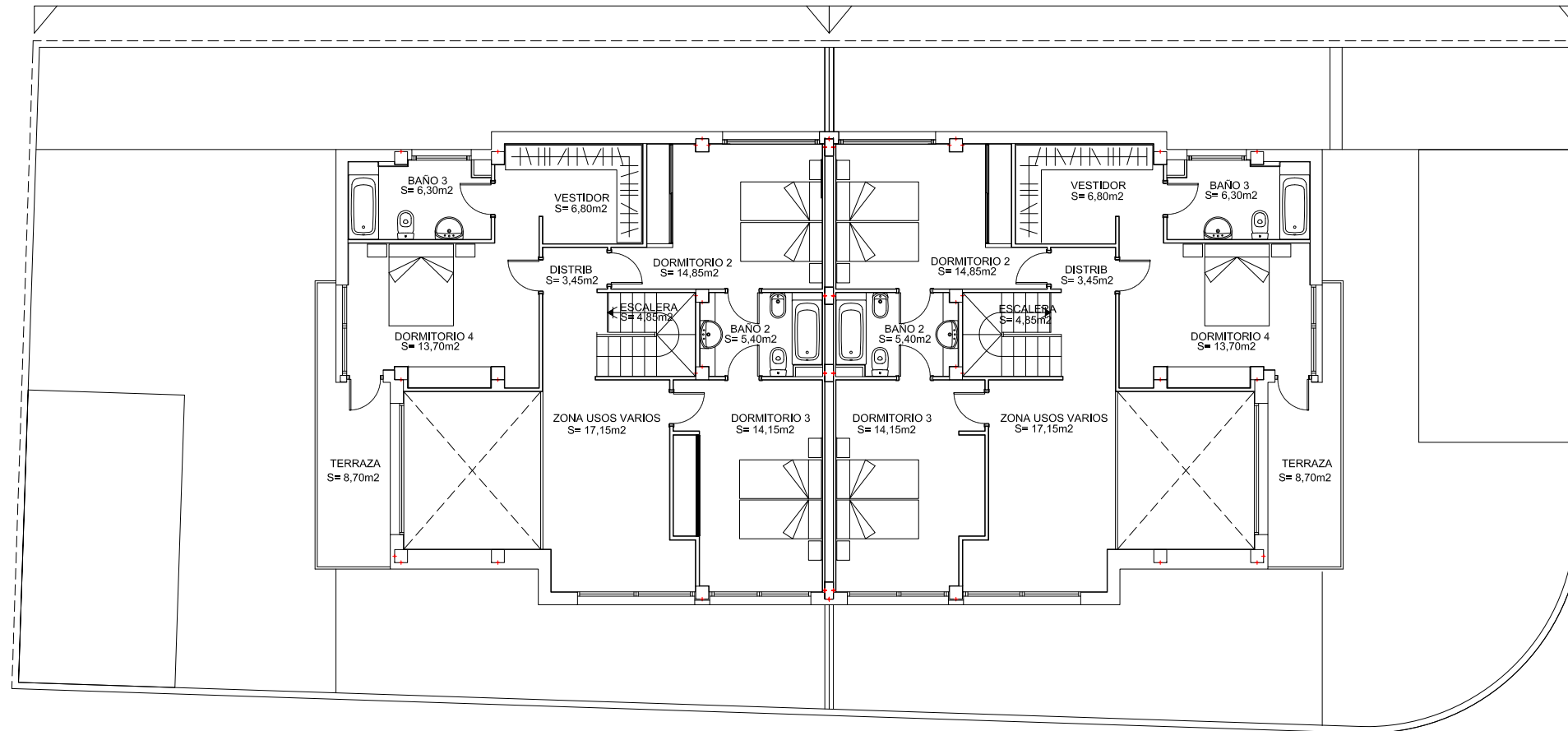
PLANTA BAJA VIVIENDAS 19 Y 20



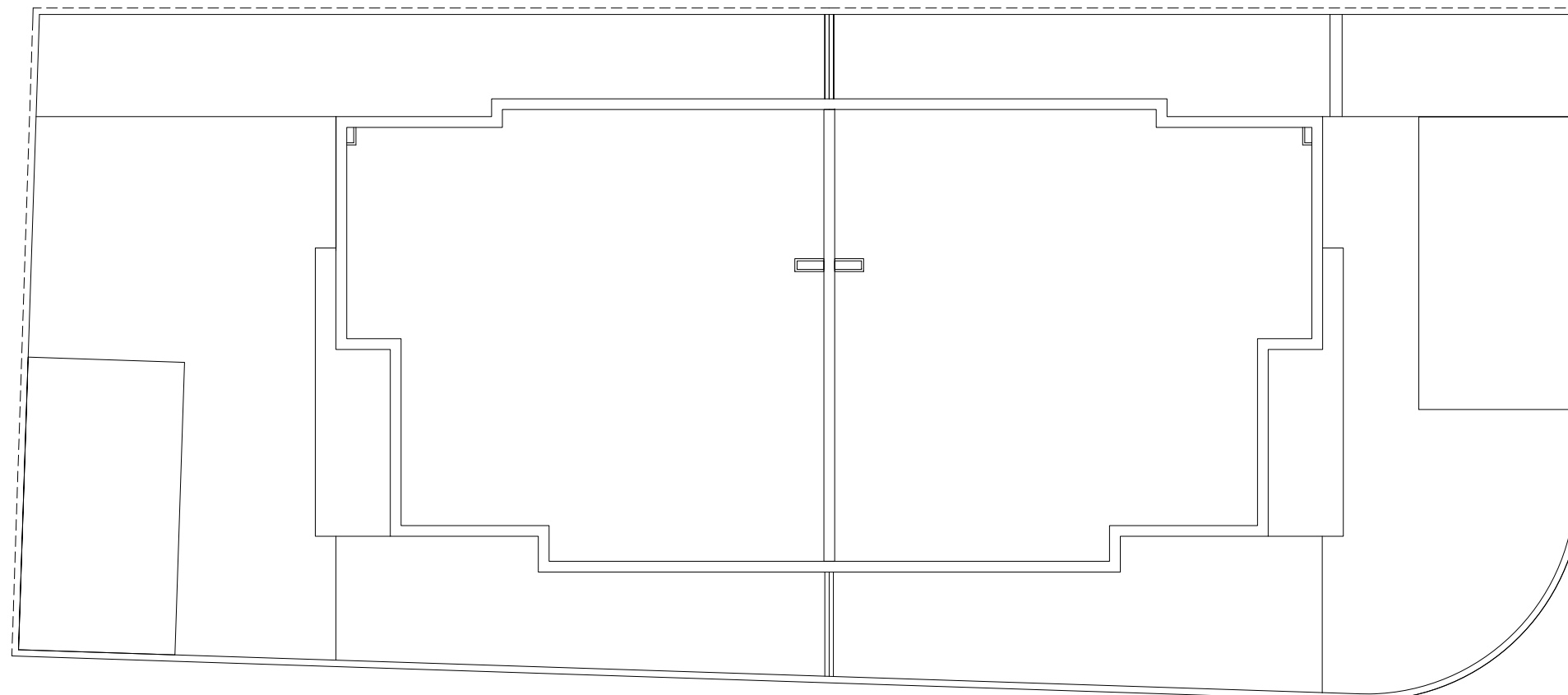
PLANTA SOTANO VIVIENDAS 19 Y 20

VIVIENDA 19

VIVIENDA 20



PLANTA PRIMERA VIVIENDAS 19 Y 20



PLANTA PRIMERA CUBIERTAS 19 Y 20



**20 VIVIENDAS  
UNIFAMILIARES PAREADAS  
PARCELA 9 SECTOR 5.2  
CUARTE DE HUERVA**

VIVIENDA 19 Sup 286,90 m<sup>2</sup>

VIVIENDA 20 Sup 272,00 m<sup>2</sup>

| SUP. UTIL CERRADA PL. BAJA |              |
|----------------------------|--------------|
| HALL                       | 10,40        |
| SALON                      | 45,15        |
| COCINA                     | 16,75        |
| BAÑO 1                     | 3,20         |
| DORMITORIO 1               | 13,15        |
| <b>TOTAL PL. BAJA</b>      | <b>88,65</b> |

| SUP. UTIL CERRADA PL. 1ª |              |
|--------------------------|--------------|
| DORMITORIO 2             | 14,85        |
| DORMITORIO 3             | 14,15        |
| DORMITORIO 4             | 13,70        |
| VESTIDOR                 | 6,80         |
| ESP. USOS VARIOS         | 17,15        |
| BAÑO 2                   | 5,40         |
| BAÑO 3                   | 6,30         |
| ESCALERA                 | 4,85         |
| DISTRIBUIDOR             | 3,45         |
| <b>TOTAL PL. PRIMERA</b> | <b>86,65</b> |

| SUP. UTIL PL. SOTANO      |               |
|---------------------------|---------------|
| GARAJE                    | 51,50         |
| BODEGA                    | 36,50         |
| ESCALERA                  | 10,00         |
| RELLANO                   | 2,45          |
| <b>TOTAL PL. SOTANO</b>   | <b>100,45</b> |
| <b>TOTAL UTIL CERRADA</b> | <b>275,75</b> |

| SUP. UTIL ABIERTA PL. BAJA |               |
|----------------------------|---------------|
| PORCHE                     | 6,79          |
| JARDIN                     | 167,90        |
| <b>TOTAL PL. BAJA</b>      | <b>174,69</b> |

| SUP. UTIL ABIERTA PL. 1ª  |               |
|---------------------------|---------------|
| TERRAZA                   | 8,70          |
| <b>TOTAL PL. 1ª</b>       | <b>8,70</b>   |
| <b>TOTAL UTIL ABIERTA</b> | <b>183,39</b> |

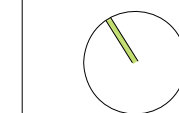
| SUP. UTIL CERRADA PL. BAJA |              |
|----------------------------|--------------|
| HALL                       | 10,40        |
| SALON                      | 45,15        |
| COCINA                     | 16,75        |
| BAÑO 1                     | 3,20         |
| DORMITORIO 1               | 13,15        |
| <b>TOTAL PL. BAJA</b>      | <b>88,65</b> |

| SUP. UTIL CERRADA PL. 1ª |              |
|--------------------------|--------------|
| DORMITORIO 2             | 14,85        |
| DORMITORIO 3             | 14,15        |
| DORMITORIO 4             | 13,70        |
| VESTIDOR                 | 6,80         |
| ESP. USOS VARIOS         | 17,15        |
| BAÑO 2                   | 5,40         |
| BAÑO 3                   | 6,30         |
| ESCALERA                 | 4,85         |
| DISTRIBUIDOR             | 3,45         |
| <b>TOTAL PL. PRIMERA</b> | <b>86,65</b> |

| SUP. UTIL PL. SOTANO      |               |
|---------------------------|---------------|
| GARAJE                    | 54,80         |
| BODEGA                    | 36,25         |
| ESCALERA                  | 8,45          |
| RELLANO                   | 4,00          |
| <b>TOTAL PL. SOTANO</b>   | <b>103,50</b> |
| <b>TOTAL UTIL CERRADA</b> | <b>278,80</b> |

| SUP. UTIL ABIERTA PL. BAJA |               |
|----------------------------|---------------|
| PORCHE                     | 6,79          |
| JARDIN                     | 153,84        |
| <b>TOTAL PL. BAJA</b>      | <b>160,63</b> |

| SUP. UTIL ABIERTA PL. 1ª  |               |
|---------------------------|---------------|
| TERRAZA                   | 8,70          |
| <b>TOTAL PL. 1ª</b>       | <b>8,70</b>   |
| <b>TOTAL UTIL ABIERTA</b> | <b>169,33</b> |



Escala Gráfica  
1 2 3 4

